

April 2024

White River First Nation-Community Newsletter Coffee Gold Mine Project

Update from WRFN Representatives of the Environment Committee

WHAT WE'VE BEEN WORKING ON THIS MONTH

Throughout April, the WRFN Environment Committee has met with Newmont to discuss a variety of on-going topics including the protection and exploration of heritage resources, impacts of the mine on culture and community, wildlife and waste management. We will continue to provide information about these topics in the coming months. This month, the newsletter will focus on Waste Management.

Waste Management - Seasonal mining exploration work has been active at Coffee Creek since 2012. Newmont has a permit for a landfill for the exploration stage. There will be a larger landfill for the mine operations. For the existing exploration landfill and the future mine landfill, we are working to reduce how much is left behind, and to make sure what is buried does not pollute the groundwater. WRFN Representatives have been recently concerned about groundwater in the exploration landfill. The landfill should not be below the water table. We have asked for:

- A plan from Newmont on how to resolve this issue.
- Groundwater sampling in summer 2024.
- Photo records of waste management inspections to ensure that the existing exploration landfill meets permit requirements.



Figure 1 TP23-01 Excavation

The photos above show where the exploration landfill has come into contact with groundwater.

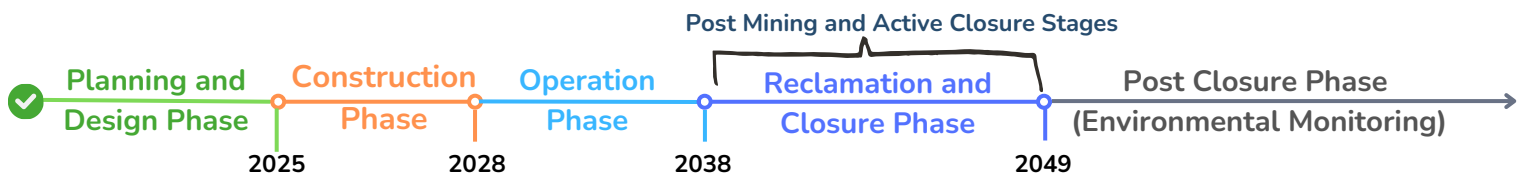
SUMMER SITE VISIT - TENTATIVE JULY 13TH

We are arranging for at least one day-trip to Coffee Creek this summer, potentially July 13. Air transport can be offered from Whitehorse and likely from Beaver Creek if we have the numbers. We have interest from a few members already... thank you!

Please contact Odin at the WRFN Lands Dept. if you are interested (867-668-4121 or email lands.coord@wrfn.ca) before May 31st, 2024.

NEWMONT HAS NO COFFEE GOLD ONSITE ACTIVITIES PLANNED FOR 2024

Construction is completely dependent on financial feasibility and obtaining mining and water licenses from the Yukon Government. An estimated schedule is shown below.



WRFN representatives continue to participate in monthly Environment Committee meetings to discuss ways of reducing the Project's environmental impacts on WRFN values.

WRFN IS HIRING PROJECT MONITORS

WRFN is in the process of hiring three project monitors for summer 2024. Newmont is not planning any work at Coffee Creek this summer and fall. Time on site when it's quiet this year gives a comparison for impacts in future years. Main topics this summer will include archaeology, cultural site monitoring, harvest at site if possible, prep future trail or cabin building, and communications with members.

Project monitors will be required throughout the life of the Mine. Training will be provided as necessary.



CONTACT US



Questions? Comments? Interested in the Summer Site Visit?
Contact Odin at the WRFN Lands Dept.
lands.coord@wrfn.ca
867-668-4121

