

Bird's Eye View

Comprehensive Community Plan
(25-100 year vision, created by the community,
covers everything, based on values)



Tree-Top View

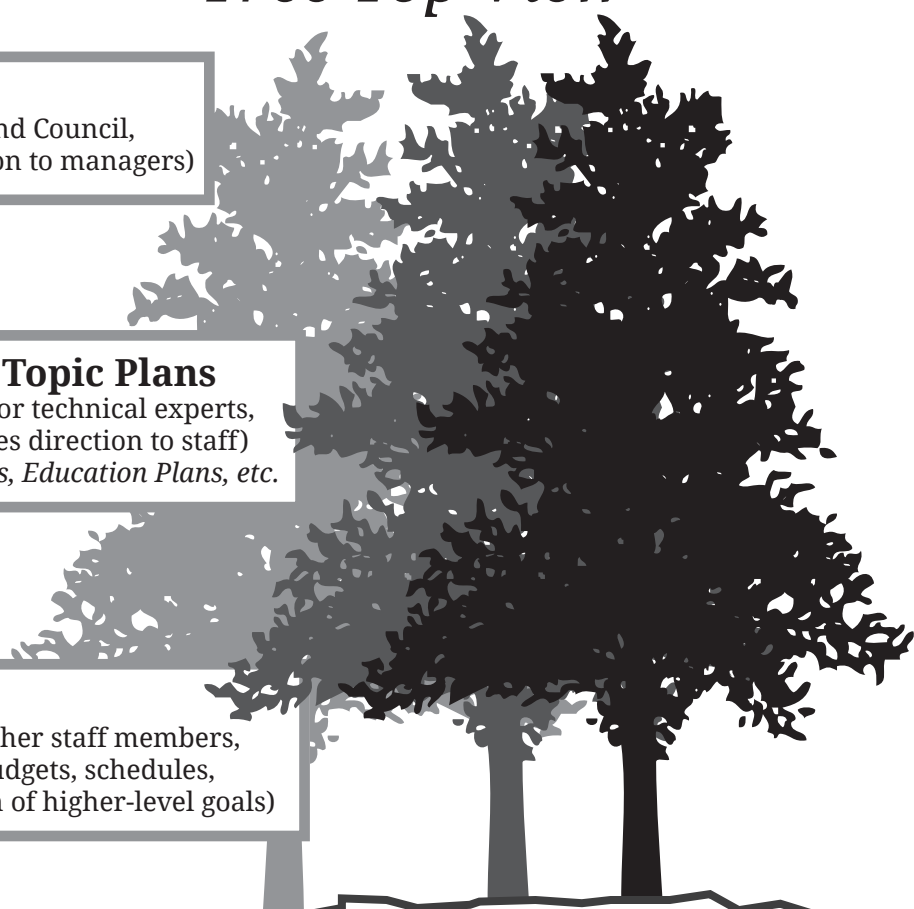
Strategic Plan
(1-10 year plan, often created by Chief and Council,
prioritizes from within the CCP, gives direction to managers)



Departmental / Specific Area or Topic Plans
(1-10 year plan, often created by Senior Managers or technical experts,
adds technical information to high-level goals, gives direction to staff)
Examples: Land Use Plans, Health Plans, Capital Plans, Education Plans, etc.



Work Plans
(1-3 year plan, often created by Managers and other staff members,
adds detailed technical information such as budgets, schedules,
deliverables, guides on-the-ground implementation of higher-level goals)



Ground-Level

© Alderhill Planning Inc. (2018) Tree image created by Kjpargeter / Bird image created by Freepik



ALDERHILL
www.alderhill.ca
Indigenous Planning
by Indigenous Planners

The Ecosystem of Indigenous Planning